



Croyde Avenue, Corby

**STUART
CHARLES**
ESTATE AGENTS

£179,950

Stuart Charles are delighted to offer for sale with NO CHAIN this three bedroom family home located near the town centre of Corby. Positioned with walking distance of several schools and shops an early viewing is recommended to avoid missing out on this home. The accommodation to the ground floor comprises of an entrance hall, large lounge/diner, kitchen and utility area. To the first floor are three good sized bedrooms and a larger than average three piece shower room. Outside to the front is a large driveway that provides off road parking for several vehicles, while to the rear a large patio area leads onto a laid lawn and the whole garden is enclosed by timber fencing to all sides.

- NO CHAIN
- LOUNGE/DINER
- LARGE THREE PIECE SHOWER ROOM
- CLOSE TO SHOPS
- CLOSE TO TOWN CENTRE
- LARGE DRIVEWAY
- MODERN KITCHEN
- WALKING DISTANCE TO PRIMARY AND SECONDARY SCHOOLS
- WALKING DISTANCE TO TRAIN STATION
- SOLD WITH TENANT IN SITU at £1000.00pcm

Entrance Hall

Entered via a double glazed door, radiator, stairs leading to first floor landing, doors to:

Lounge/Diner

19'8 x 11'6 (5.99m x 3.51m)

Double glazed window to front elevation, radiator, tv point, telephone point, double glazed French doors to rear, door to:

Kitchen

10'4 x 8'4 (3.15m x 2.54m)

Fitted to comprise a range of base and eye level units with a one and a half bowl steel sink and drainer, gas hob with extractor, electric oven, space for automatic washing machine, space for free standing fridge freezer, radiator, under stairs storage, double glazed window to rear elevation, door to utility area.







Utility

6'4 x 5'0 (1.93m x 1.52m)

Archway to hallway, space for white goods.

First Floor Landing

Airing cupboard, doors to:

Bedroom One

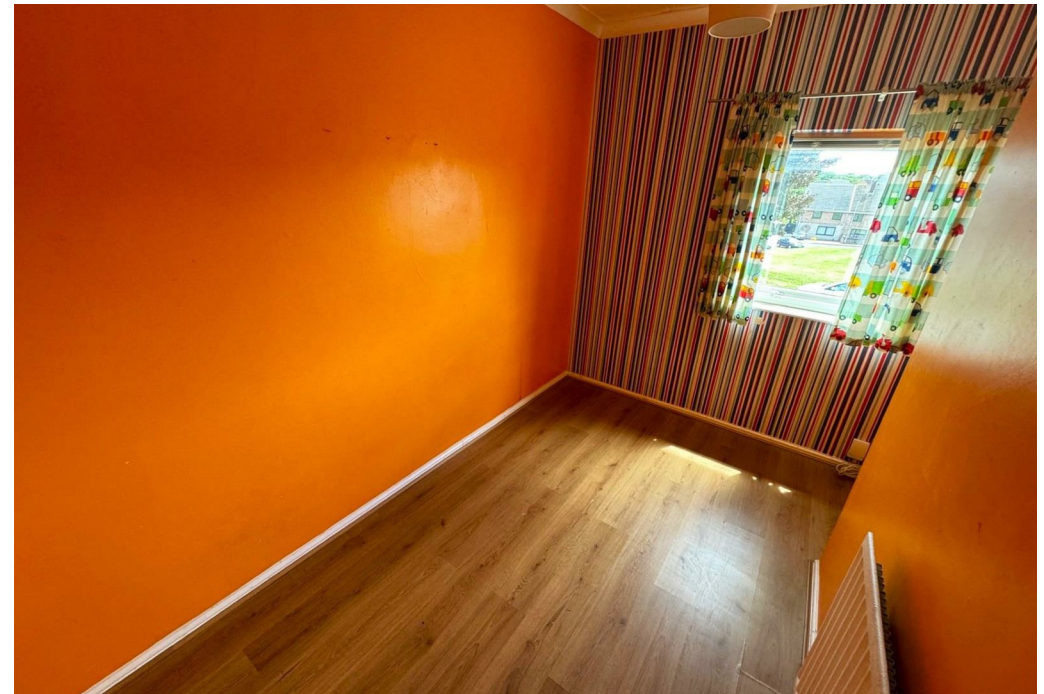
11'6 x 9'0 (3.51m x 2.74m)

Double glazed window to front elevation, radiator, built in wardrobe.

Bedroom Two

11'6 x 7'8

Double glazed window to rear elevation, radiator.





Bedroom Three

10'4 x 7'6 (3.15m x 2.29m)

Double glazed window to front elevation, radiator.

Shower Room

Fitted to comprise a three piece suite featuring a double shower cubicle with electric shower, low level pedestal, low level wash hand basin, radiator, double glazed window to rear elevation.

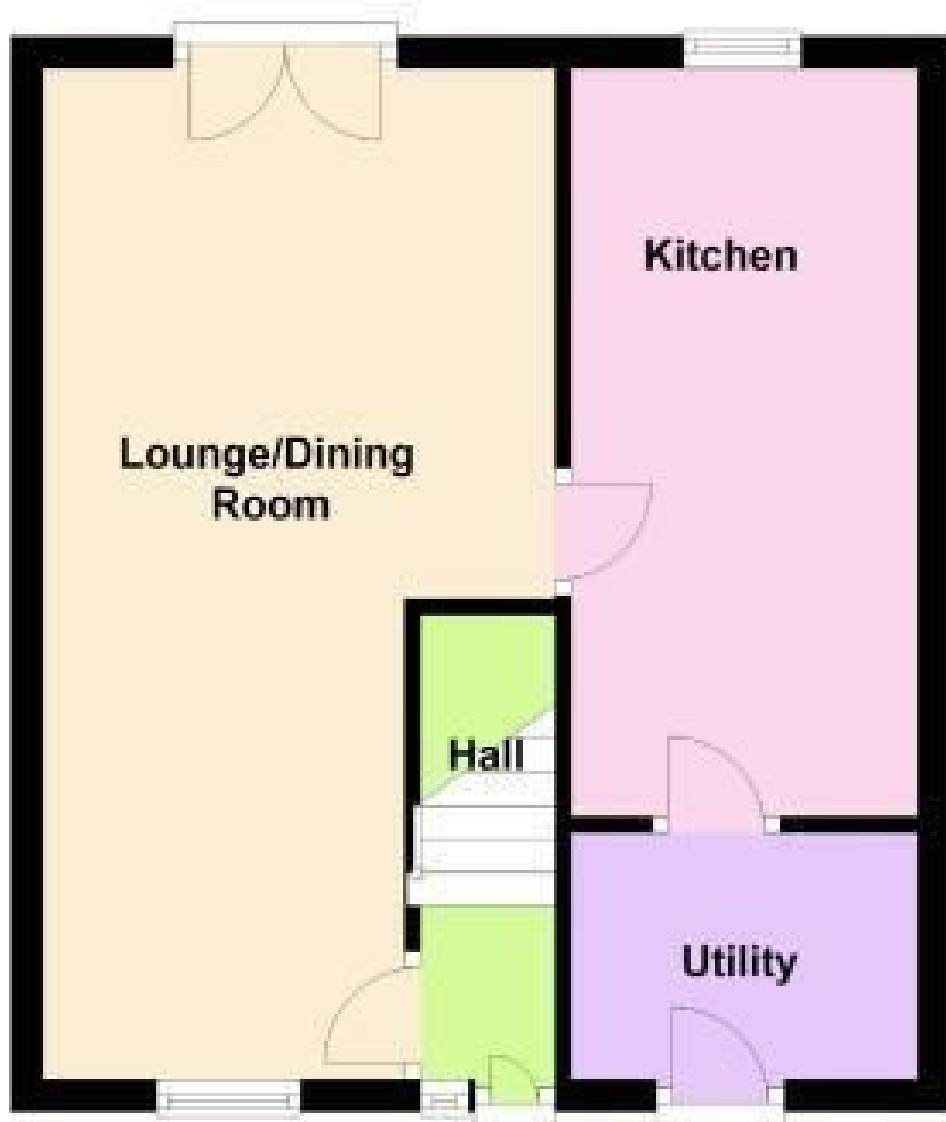
Outside

Front: A large driveway provides off road parking for multiple vehicles and is enclosed by dwarf wall and timber fencing.

Rear: A large patio area leads onto a laid lawn and is enclosed by timber fencing to all sides.



Ground Floor



First Floor

